

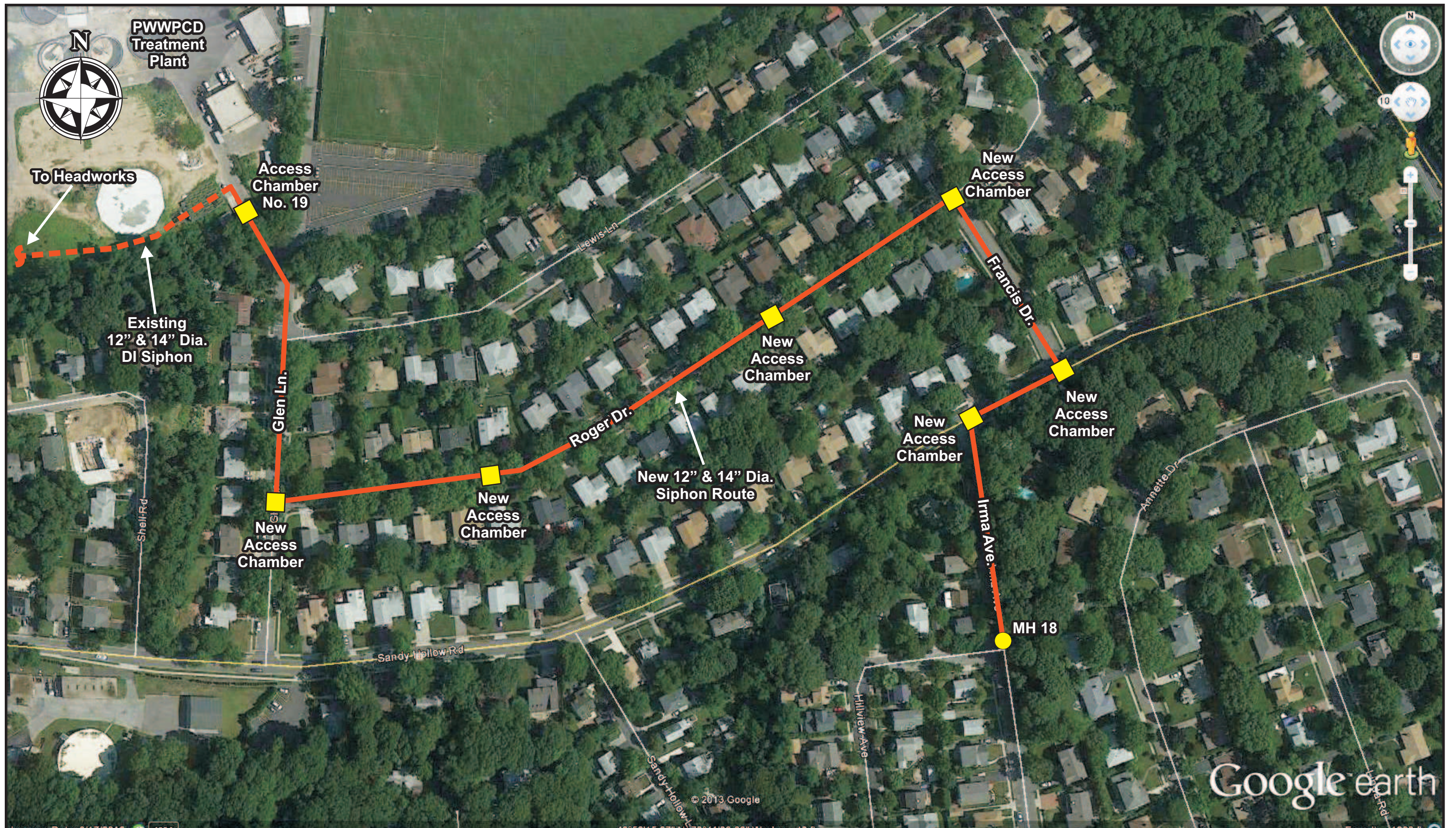
0279/PortWash/Job/WW(04/01/13)RLA

**D&B ENGINEERS
AND
ARCHITECTS, P.C.**
KNOWN AS DVIRKA AND BARTILUCCI CONSULTING ENGINEERS

PORT WASHINGTON WATER POLLUTION CONTROL DISTRICT

EXISTING 12" AND 14" DIAMETER SIPHON ROUTE

FIGURE 1



0279/PortWash/Jobs/WW(04/01/13)RLA

**D&B ENGINEERS
AND
ARCHITECTS, P.C.**
KNOWN AS DVIRKA AND BARTILUCCI CONSULTING ENGINEERS

PORT WASHINGTON WATER POLLUTION CONTROL DISTRICT

**ALTERNATIVE 1
REROUTE NEW 12" AND 14" SIPHON DOWN FRANCIS DR./RODGER DR.**

FIGURE 2